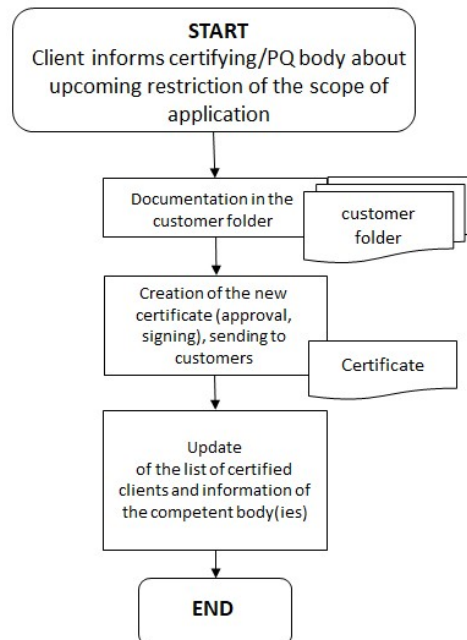


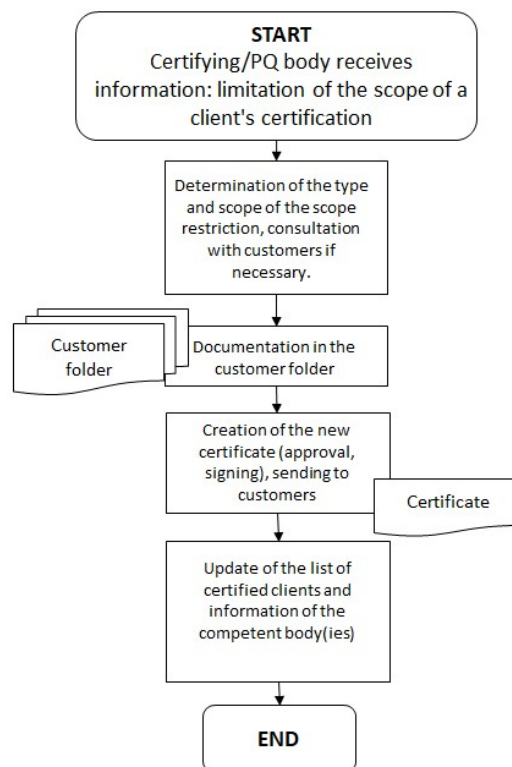
Certification: Withdrawal, Restriction, Suspension

Applicable to all certifications of the certification body:

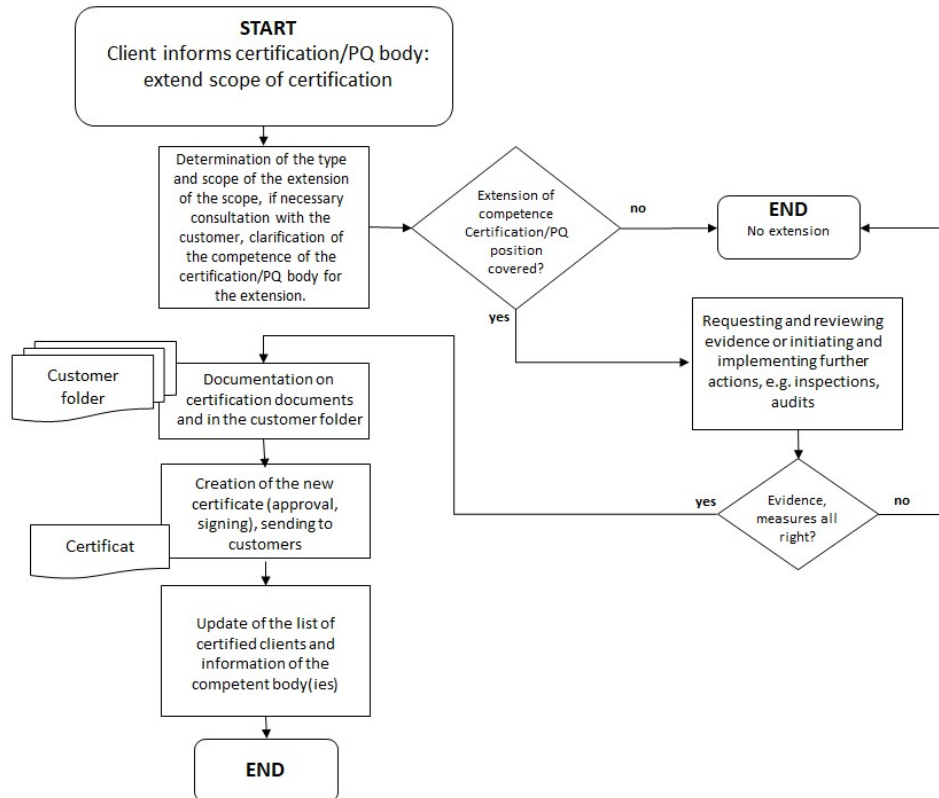
1. Restriction of the scope of a certificate at the customer's request



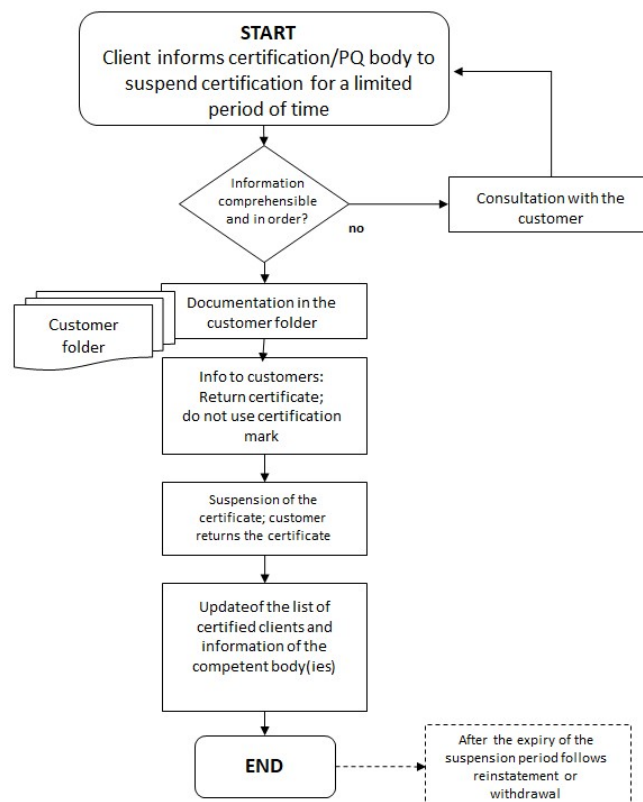
2. Restriction of the scope of a certificate on the initiative of the certification/pre-qualification body



3. cancellation of the restriction or extension of the scope.

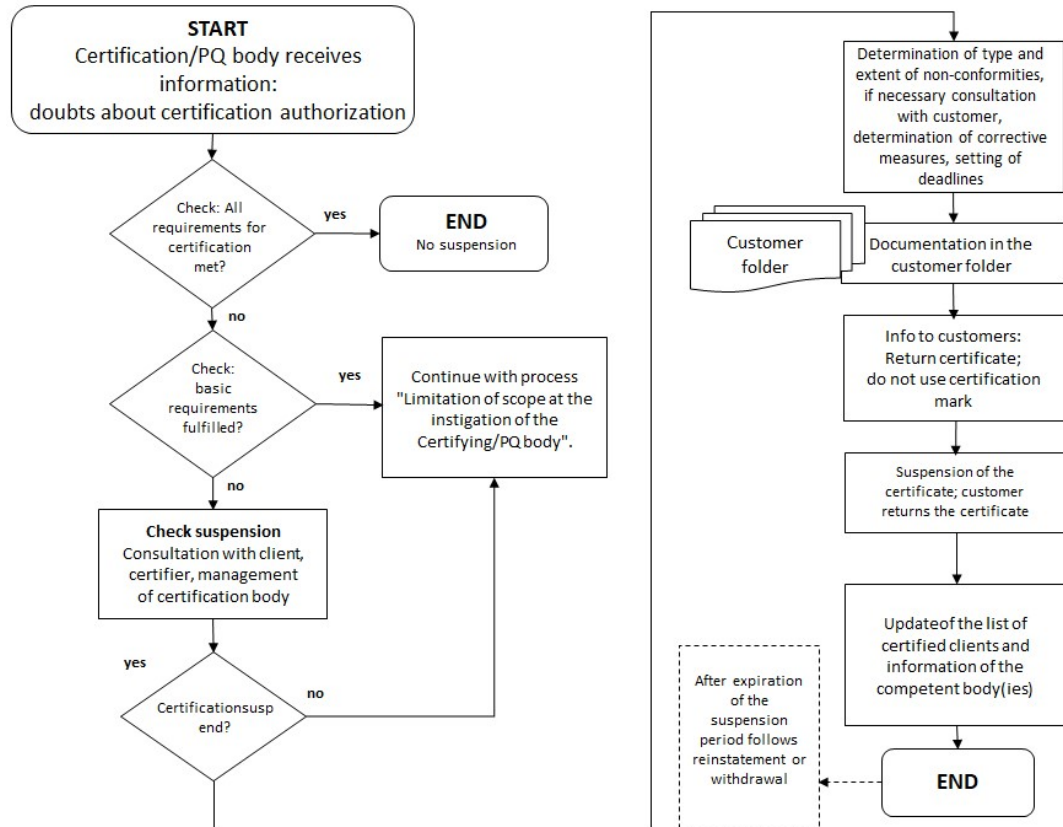


4. Suspension of certification at the request of the customer

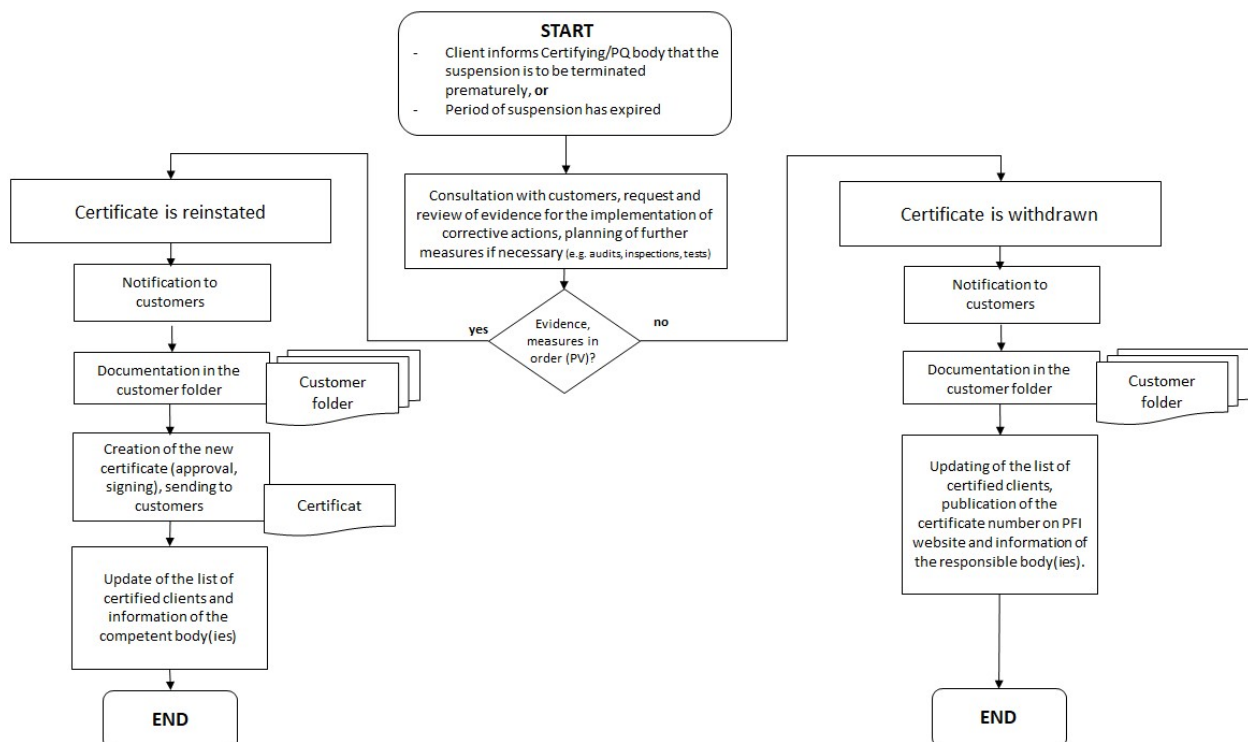


Certification: Withdrawal, Restriction, Suspension

5. Suspension of certification on the initiative of the certification/pre-qualification body.



6. Reinstatement or withdrawal of certificates



PFI	PRÜF- UND FORSCHUNGSINSTITUT PIRMASENS E.V. - ZERTIFIZIERUNGSSTELLE -	P	B		9. 6. 1				
Certification: Withdrawal, Restriction, Suspension						PROD	SYST	PRÄQ	ETI
						Revision		008	
						Freigabe		15-08-2023	

In the management system documentation of the certification and prequalification body of the PFI, the symbols of the flow charts are designed and used in accordance with DIN 66001 as follows:

