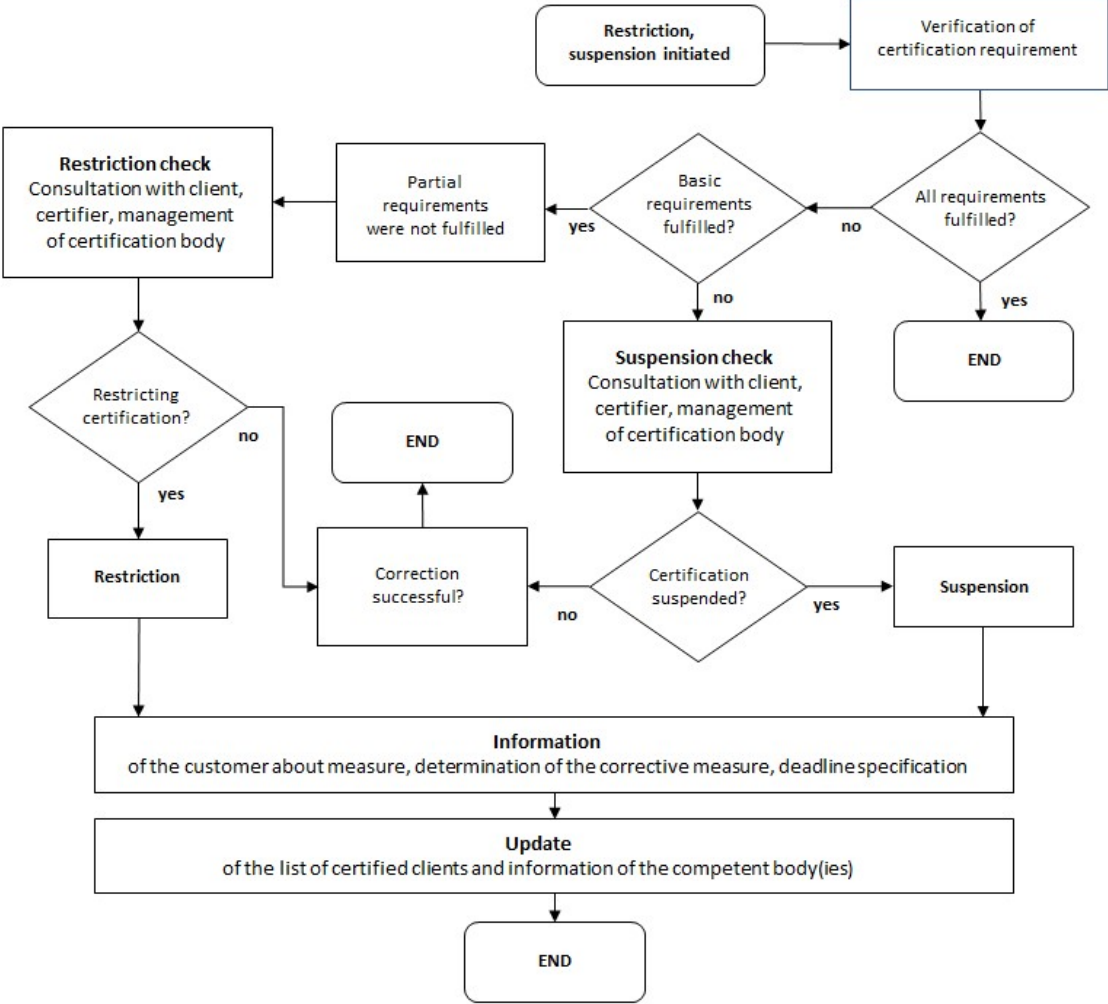


Applicable to all certifications of the certification body:



The procedure for restriction and suspension can be initiated at the instigation of the certification body, the client or third parties. Under certain conditions, withdrawal can also take place immediately. An example of this are violations of the law.

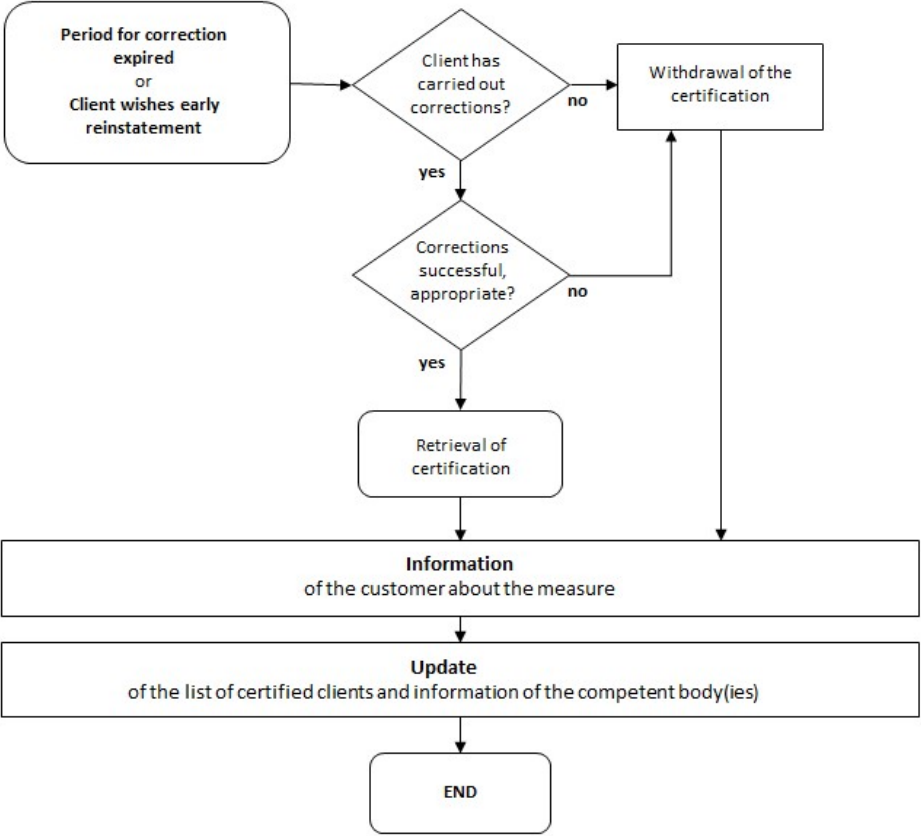
The scope of certification is restricted to exclude those parts that do not meet the requirements. This is done in accordance with the requirements of the standard used for certification.

In the event of restriction, suspension or withdrawal of the certificate, the certification body shall amend all official certification documents, public information, authorisations to use marks, etc. to ensure that clients are clearly informed of the status of the certificate.

Certification may be retrieved when the problem that led to the suspension has been resolved. The certification body shall specify a period of time for the resolution of the problems, usually not exceeding 6 months. All changes to official certification documents, public information, authorisations to use marks, etc. are made to ensure that all indications that the product or management system or prequalification is still certified are in place.

Failure to resolve the issue for suspension will result in withdrawal of certification.

Restoration:



In the management system documentation of the PFI certification and prequalification body, the symbols of the flow charts are designed and used borrowing from DIN 66001 as follows:

	Rectangle with rounded corners: Start and end of the schedule		Rectangle with wavy line: Record, Document, Evidence, Proof
	Instead of "start" and "end", the event that triggers or concludes the process can also be named.		Three superimposed rectangles with wavy lines: Multiple records, Documents, Evidence, Proofs
	Lines, arrows: Connection to the next element		Combination of rectangle and rectangle with wavy lines: Operation, Activity, Action with Reference to a Record. For example: Creating documentation for an action; using a record in an activity.
	Rectangle: Operation, Activity, Action		Circle with number: Jump in the schedule The numbers refer to related interruptions and continuations of the schedule, the colours to the beginning and end of the respective jump.
	In the sub-programme: start and end of the sub-programme.		Circle with blue filling and arrow pointing inside: The jump begins here. The schedule is interrupted at this point.
	After the sub-programme has been processed, the main schedule is continued, starting from the symbol of the sub-programme concerned.		Circle with red filling and arrow pointing out: The jump ends here. The schedule continues at this point.
	Rhombus: Decision After that, the schedule branches out depending on the decision		